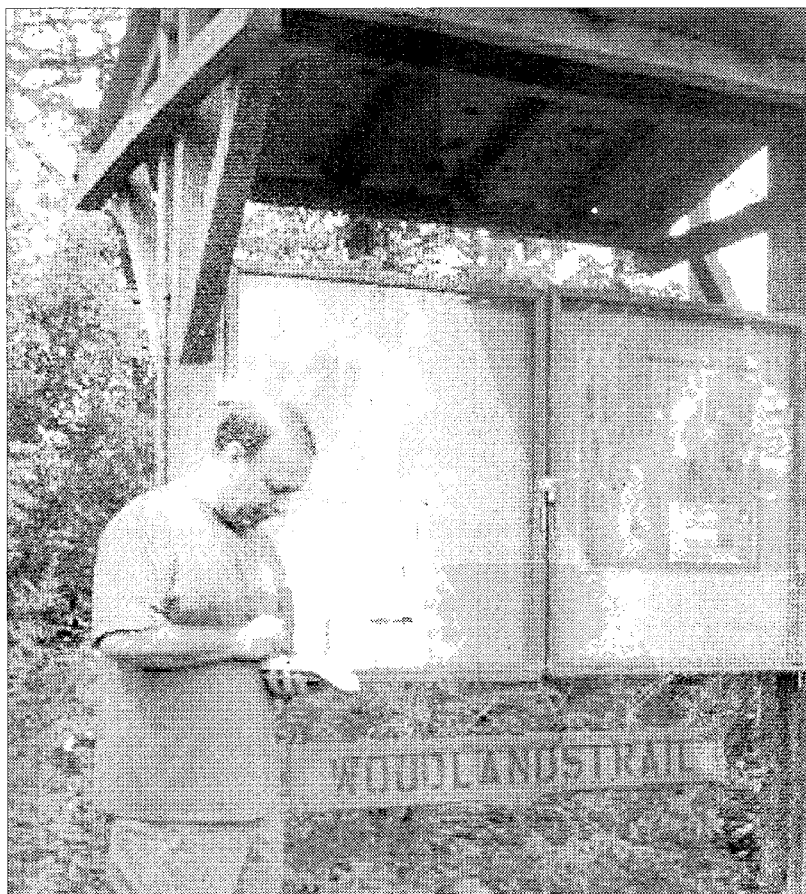


Trimble Donation Allows Course Charting for Woodlands Trail Classic



Clayton White, Woodlands Trail Classic Chairman, uses the Explorer donated by Trimble to chart the course for the second Annual New Year's Eve Woodlands Trail Classic in Belle Chasse.

When Woodlands Trail and Park held the first Woodlands Trail Classic on New Year's Eve in 2005, Tulane Hebert Research Center graciously allowed the nonprofit organization the use of its property for the race. As Hurricane Katrina had essentially obliterated any signs of trails within the Woodlands property, the Woodlands group was grateful to their Tulane neighbors as it provided an opportunity to give participants a glimpse of what Woodlands Trail would offer in terms of a bottomland hardwood forest, World War II ammunition magazines and sightings of migratory birds and other wildlife.

When Trimble, a leader in GPS technology and advanced positioning solutions, heard of Woodlands Trail and Park's attempts to utilize over 1,800 GPS points to "rediscover" the Woodlands trail system, they came to the rescue. The Trimble unit donated to Woodlands allows the organization to locate trails, bridge locations, kiosk locations and other park features. Software, also provided by Trimble, allowed the Woodlands group to load data from the Engineering firm that had designed the park into a hand-held unit.

The Woodlands organization is currently using the Trimble Geo Explorer to map out the path for the second Annual Woodlands Trail Classic. The organization hopes to have the 8 a.m. 5K and Fun Run on Woodlands Trail this New Year's Eve.

To sign-up for the Woodlands Trail Classic 5K and Fun Run, visit www.woodlandstrail.org